



## महाराष्ट्र शासन

दिव्यांग कल्याण विभाग,

३१, ३२, ३५ए, मित्तल टॉवर, ए-विंग, तिसरा मजला,  
बॅरीस्टर रजनी पटेल मार्ग, नरीमन पॉईंट, मुंबई-०२१.

दूरध्वनी क्र.- ०२२-४०१४५१७६

Email ID : [ds1.dkv@maharashtra.gov.in](mailto:ds1.dkv@maharashtra.gov.in)

क्रमांक : इडीडी २०२४ / प्र. क्र. १७८ / दि.क.-१

दिनांक : १६ सप्टेंबर, २०२४

### दरपत्रक सूचना

विषय:- दिव्यांग कल्याण विभागांतर्गत असलेल्या अनुदानित विशेष शाळा व कार्यशाळांची तसेच त्यामधील पायाभूत सुविधांची तपासणी करण्याच्या अनुषंगाने निरीक्षण कार्यप्रणाली विकसित करणेबाबत.

#### १. खरेदीची व्याप्ती :-

दिव्यांग कल्याण विभागांतर्गत असलेल्या अनुदानित विशेष शाळा व कार्यशाळा तसेच त्यामधील पायाभूत सुविधांची तपासणी करण्याच्या अनुषंगाने निरीक्षण कार्यप्रणाली विकसित करण्याकरिता मोहोरबंद लिफाफ्यामध्ये इच्छुक पुरवठादार / प्राधिकृत वितरक / विक्रेते यांच्याकडून सोबत जोडलेल्या Terms of Reference (ToR) अनुसार दरपत्रके मागविण्यात येत आहेत.

#### २. दरपत्रक सादर करावयाचा दिनांक

मोहोरबंद लिफाफ्यातील दरपत्रके अवर सचिव (दि.क.-१), दिव्यांग कल्याण विभाग, ३१, ३२, ३५ए, मित्तल टॉवर, ए-विंग, तिसरा मजला, बॅरीस्टर रजनी पटेल मार्ग, नरीमन पॉईंट, मुंबई-०२१. यांच्या नावे दि. २६ सप्टेंबर, २०२४ रोजी सायंकाळी ५.३० वाजेपर्यंत पाठवावेत अथवा प्रत्यक्ष सादर करावेत. मोहोरबंद लिफाफ्यावर ठळक शब्दात "दिव्यांगांच्या विशेष शाळा / कार्यशाळा निरीक्षण कार्यप्रणाली विकसित करणे" असे नमूद करावे.

सहपत्र : Terms of Reference (ToR)

आपला,  
RAJESH  
BHASKAR  
GAIKWAD  
(रा.भा. गायकवाड)

अवर सचिव, महाराष्ट्र शासन

प्रत,

१. प्रत, आवश्यक त्या पुढील कार्यवाहीसाठी अग्रेषित
२. उप सचिव (संगणक कक्ष) दिव्यांग कल्याण विभाग, मंत्रालय, मुंबई-३२
३. निवडनस्ती/दि.क.-१.

Terms of Reference (TOR) for the  
Development of Inspection and Audit  
application for Schools Managed by the  
PwDs Welfare Department

## Table of Contents

<b>1. Introduction and Background.....</b>	<b>3</b>
<b>1.1 Vision and Mission of the (PwDs) Welfare Department, Maharashtra .....</b>	<b>4</b>
<b>1.2 Objectives and Functions of the (PwDs) Welfare Department, Maharashtra.....</b>	<b>4</b>
<b>1.3 Functions of the (PwDs) Welfare Department, Maharashtra .....</b>	<b>5</b>
<b>1.4 Administrative Setup of the (PwDs) Welfare Department, Maharashtra .....</b>	<b>6</b>
<b>1.5 Organizations under (PwDs) Welfare Department, Maharashtra .....</b>	<b>6</b>
<b>2. Scope of Work .....</b>	<b>8</b>
<b>2.1 Project Description.....</b>	<b>8</b>
<b>2.2 Objective of the Project.....</b>	<b>8</b>
<b>2.3 Schools run by PwDs Welfare Department.....</b>	<b>8</b>
<b>3. Scope of Work .....</b>	<b>10</b>
<b>3.1 Selection Method .....</b>	<b>10</b>
<b>3.2 Terms and Conditions .....</b>	<b>11</b>

## 1. Introduction and Background

The Persons with Disabilities (PwDs) Welfare Department was formed as an independent department on 15<sup>th</sup> December 2022 with an aim at implementing various schemes for the welfare of persons with disabilities. As per Census of India 2011, the persons with disabilities in India are as given below -

Population, India 2011			Disabled Persons, India 2011		
Persons	Males	Females	Persons	Males	Females
121.08 crore	62.32 crore	58.76 crore	2.68 crore	1.50 crore	1.18 crore

As per Census 2011, there are 29,63,392 persons with disabilities in Maharashtra and it was 2.63% of total population of the Maharashtra State covered 7 disabilities at that time as mentioned below -

Population, Maharashtra 2011			Disabled Persons, Maharashtra 2011		
Persons	Males	Females	Persons	Males	Females
11.24 crore	5.83 crore	5.41 crore	29.6 lakh	16.9 lakh	12.7 lakh

As per Census of India 2011, the population of (PwDs) in Maharashtra was categories into 8 types are as mentioned below –

S. No	Particular	Male	Females	Total
1	In seeing	3,11,835	2,62,217	5,74,052
2	In Hearing	2,64,956	2,08,315	4,73,271
3	In Speech	2,60,792	2,12,818	4,73,610
4	In Movement	3,57,348	1,91,070	5,48,418
5	Mental Retardation	90,408	69,801	1,60,209
6	Mental Illness	32,907	25,846	58,753
7	Any Other	2,79,048	2,31,688	5,10,736
8	Multiple Disability	94,991	69,352	1,64,343
9	<b>Total number of (PwDs) in Maharashtra</b>	<b>16,92,285</b>	<b>12,71,107</b>	<b>29,63,392</b>

The Rights of Persons with Disabilities Act was enacted in the 2016. It promotes and protects the rights and dignity of people with disabilities in various aspects of life – educational, social,

legal, economic, cultural, and political. It applies to government, non-government, and private organisations. The types of disabilities under RPwD Act can be classified under twenty-one heads (21). These have been listed below -

- Blindness
- Low Vision
- Leprosy Cured Persons
- Hearing Impairment (Deaf and Hard of Hearing)
- Locomotor Disability
- Dwarfism
- Intellectual Disability
- Mental Illness
- Autism Spectrum Disorder
- Cerebral Palsy
- Muscular Dystrophy
- Chronic Neurological Conditions
- Specific Learning Disabilities
- Multiple Sclerosis
- Speech and Language Disability
- Thalassemia
- Hemophilia
- Sickle Cell Disease
- Multiple Disabilities (more than one of the above specified disabilities)
- Acid Attack Victim
- Parkinson's Disease

## 1.1 Vision and Mission of the (PwDs) Welfare Department, Maharashtra

### **Vision**

To build an inclusive society in which equal opportunities are provided for the growth and development of Persons with Disabilities so that they can lead productive, safe and dignified lives.

### **Mission**

To empower Persons with Disabilities, through its various Acts/ Institutions/Organizations and Schemes for rehabilitation and to create an enabling environment that provides such persons with equal opportunities, protection of their rights and enables them to participate as independent and productive members of society.

## 1.2 Objectives and Functions of the (PwDs) Welfare Department, Maharashtra

### **Objectives**

The primary objective of the department is to ensure:

1. Respect for inherent dignity, individual autonomy including the freedom to make one's own choices, and independence of persons with disabilities.

2. Non-discrimination
3. Full and effective participation and inclusion in society
4. Respect for difference and acceptance of persons with disabilities as part of human diversity and humanity.
5. Equality of opportunity
6. Accessibility

## **Values**

### **1. Collaborative**

We believe that jointly working towards a common goal not only creates a far greater impact, but also brings value to all those involved.

### **2. Dedication**

We are compassionate and committed to our vision, mission, and the people we serve, by aligning our work and decisions with our cause.

### **3. Inclusive**

We aim at creating a society inclusive of all by advocating qualities such as empathy, accessibility and through our activities.

### **4. Inspirational**

We are dedicated to making a positive difference, while constantly instilling a sense of hope and optimism to those in need.

### **5. Openness**

We welcome diverse ideas and views. We ensure that we engage respectfully, appropriately, clearly, sensibly, and collaboratively in an exchange of information and ideas for the benefit of the people we serve.

### **6. Trustworthy**

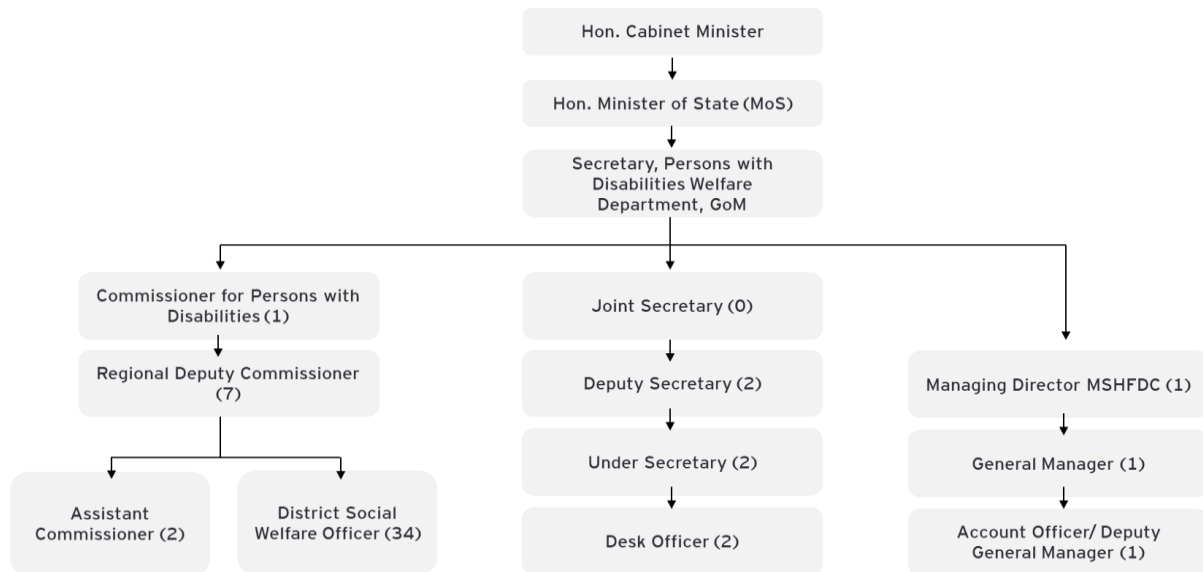
As reliable partners to all our stakeholders, we serve and perform our role with integrity and excellence, guided by our moral ethics and principles.

## **1.3 Functions of the (PwDs) Welfare Department, Maharashtra**

- Implementation of Rights of Persons with Disabilities Act 2016 and various policies/act related to (PwDs) in Maharashtra
- Implementing Central and State Government for (PwDs) in Maharashtra
- Disbursing subsidies, scholarships, incentives, and monitoring of operations in Maharashtra
- Progressively achieving paperless offices and introducing suitable Information Technology tools towards process automation.

- Proactively providing information for initiatives by the Department through various channels.
- Implementing flagship programs in various domains identified from time to time.
- Promoting IEC, conferences, workshops, webinars, and exhibitions to improve stakeholder participation in the disability sector.

#### 1.4 Administrative Setup of the (PwDs) Welfare Department, Maharashtra



#### 1.5 Organizations under (PwDs) Welfare Department, Maharashtra

##### 1. Commissionerate for Persons with Disabilities, Maharashtra State, Pune

In Maharashtra State in the year 1957, the Directorate of Social Welfare was established at Pune., The Women and Child Development, Tribal Welfare, VJNT Welfare and Handicapped (Divyang) Welfare were included in the Department of Social Welfare.

An Independent disability Welfare Commissionerate was established by the Social Justice and Special Assistance Department Government of Maharashtra on 19.08.2000 to implement the provisions of the Persons with Disabilities (Equal Opportunity, Protection of Rights and Full Participation) Act, 1995 as per section 60(1) by the Government Resolution dated 22<sup>nd</sup> January 2004 and dated 14<sup>th</sup> October 2004 respectively. Prior to the establishment of the Independent Commissionerate, all the schemes for Persons with Disabilities were implemented by social Welfare Department, Government of Maharashtra, Pune. The following Acts Provisions are being implemented by the Commissionerate.

- Rehabilitation Council of India Act, 1992.

- National Trust Act, 1999 (The national Trust for Welfare of Persons with Autism, Cerebral Palsy Mental Retardation and Multiple Disability)
- The Rights of Persons with Disabilities Act 2016.

## **2. Maharashtra State Handicapped Finance and Development Corporation (MSHFDC), Mumbai**

Maharashtra State Handicapped Finance and Development Corporation, Mumbai has been established vide Social Justice Dept. Government Resolution No.EDD-2001/C.R.65/Sudhar-3 Dated 21.11.2001 and registered under section 25 of Companies Act, 1956 on 27<sup>th</sup> March 2002.

The main object of this corporation is as follows.

- To undertake, carry on, assist to carry on and promote economic development activities including self-employment and other ventures for benefit and economic rehabilitation of handicapped persons regardless of their religion, sex, caste, and age, in collaboration with State Government Ministries/Departments,
- Extend financial assistance/loans/concessional finance to handicapped persons for implementing economically and financially viable schemes /projects,
- To grant loans to the handicapped for pursuing education at graduation and higher levels,
- To assist in up gradation/ improvement of technical and entrepreneurial skills,
- To set up training, quality control, process development and other infrastructural development activities aimed to achieve economic rehabilitation/upliftment of handicapped persons,
- To assist other organizations engaged in rehabilitation of the handicapped by providing financial assistance,
- To assist businesses run by handicapped persons in procuring raw materials and marketing finished goods and to work as an Apex Institution for the State of Maharashtra for channelizing the funds received from State Finance Corporation or the Central Government.

The Maharashtra State Handicapped Finance and Development Corporation (MSHFDC) provides three schemes:

- Term Loan (Small & Medium Scale Business)
- Education Loan
- Micro Credit Finance



## 2. Scope of Work

### 2.1 Project Description

The Persons with Disabilities (PwDs)Welfare Department operates schools and workshops for visually impaired, deaf and dumb, locomotor disabled, and intellectually disabled students on aided, unaided, and permanent unaided basis.

The department is currently conducting school inspections offline through the assistance of the District Social Welfare Officers (DSWOs). However, this method presents several challenges, including issues of transparency, as the department must depend on the DSWOs for the accuracy and reliability of the inspection reports.

For this purpose, the PwDs welfare department intends to develop and implement Inspection and Audit application for schools managed by the PwDs Welfare Department and other infrastructure facilities.

There are 932 aided schools/workshops for the especially abled students managed by the department with approximately 43,314 students with disabilities enrolled in these schools.

### 2.2 Objective of the Project

- The objective for the development of the application is to ensure digital inspections of aided schools, workshops and other premises under the department.
- It should be easy to use mobile application, should have ability to capture non-compliance, etc.

### 2.3 Schools run by PwDs Welfare Department

The Persons with Disabilities Welfare Department, Maharashtra, runs 932 schools that collectively provide education and cater to a student population of 43,314. The district wise number of schools and students are as mentioned below –

S. No	Name of the District	Number of the School	Number of the Students
1	Ahmednagar	21	1296
2	Akola	5	421
3	Amravati	36	1,430
4	Beed	51	2,344
5	Bhandara	13	441
6	Buldhana	19	1,030
7	Ch. Sambhaji Nagar	27	1,269
8	Chandrapur	13	508
9	Dharashiv	28	1,086
10	Dhule	15	883
11	Gadchiroli	17	641
12	Gondiya	8	354

13	Hingoli	21	731
14	Jalgaon	16	1,086
15	Jalna	15	446
16	Kolhapur	19	1,150
17	Latur	72	2,519
18	Mumbai (Suburban)	26	3,007
19	Mumbai II	28	324
20	Nagpur	70	3,647
21	Nanded	80	2,655
22	Nandurbar	4	477
23	Nashik	19	1,151
24	Palghar	7	528
25	Parbhani	34	1,172
26	Pune	65	3,404
27	Raigarh	3	478
28	Ratnagiri	5	244
29	Sangli	20	1,476
30	Satara	17	660
31	Sindhudurg	1	143
32	Solapur	60	2,171
33	Thane	26	1,959
34	Wardha	17	478
35	Washim	14	509
36	Yavatmal	40	1,196
<b>Total</b>		<b>932</b>	<b>43,314</b>

### 3. Scope of Work

The scope for development of the Inspection and Audit application for schools managed by PwDs Welfare department are as mentioned below -

- It should be able to configure different inspection forms in any language in the application. The bidder will be required to develop a maximum of six different inspection forms.
- Mobile app to be compatible with Android 7 or above and should have easy to use interface to submit the duly filled forms.
- The mobile app should work in Offline mode in absence of network availability.
- Should be able to take pictures, upload media files, documents etc., from the app itself.
- App should track the geo location of the user.
- Logins should be developed for all the Inspection authorities based on the Regions/Division /Districts, etc., with user management facility.
- Drill-down dashboards on web portal are to be developed for the Survey/Inspection on the feedback portal for all stakeholders.
- Should be able to clearly bifurcate on the areas which are non-compliant & non-conformance and assign action plans to mitigate those non-conformance points.
- The application vendor will train the users, provide department a support, and should develop the required reports.
- The application should have the facility to plan/schedule various application by the supervising authorities and the dashboard to monitor the progress of the scheduled activities.
- The bidder is required to refer to Paragraph 13 and consider Annexure B of the Government Resolution dated 8<sup>th</sup> April 2015, along with the self-assessment format provided in the GR dated 16<sup>th</sup> July 2024, during the application development process.
- Any additional points related to the project.

#### 3.1 Selection Method

The selection of vendors will be based on the least cost based (L1) proposal. The issue of this request for procurement does not imply that the department is bound to select a bidder or to appoint the selected bidder for development of the application. The PwDs Welfare department reserves the right to reject all or any of the bidders or bids without assigning any reason whatsoever.

To respond to the above requirement, bidders are requested to-

- Confirm that the bidder organization has not been blacklisted and/or debarred by any Government /Semi-Government/PSU organization.
- Share technical proposal in detail.
- Provide commercial quotes for the indicative scope of work mentioned above.

### 3.2 Terms and Conditions

**Please note that-**

- The bidder must have an existing application that has similar services as envisage by the department.
- The application source code to be transferred to the PwDs welfare department as and when required. The application may be required to be hosted on the NIC infrastructure or any other infrastructure chosen by the department. The bidder is free to use the application for any other organization/department. The bidder may quote comprehensive price while submitting the bids, considering the said scenario.
- The payment for the development of more inspection forms beyond the six forms as envisaged would be made after the due assessment by the NIC officials about the efforts required in terms of the man hours.
- The validity of the rate quoted will be 60 days.
- The payment for the application will be made upon handover of the application approved by the Department and remaining payment for the maintenance and other activities will be done on monthly or quarterly basis. The service provider should submit invoices in original to the PwDs Welfare department.
- The bidder must demonstrate that the required facilities that are envisaged by the PwDs department exist in the application.
- The existing application should be handed over to the PwDs department within one months from the date of Work order.
- Subcontracting is not allowed while executing this work.
- The bidder shall keep confidential any information related to this service with the same degree of care as it would treat its own confidential information. The bidders shall note that the confidential information will be used only for the purposes of this procurement and shall not be disclosed to any third party for any reason whatsoever.
- The PwDs welfare department shall be under no obligation to accept the lowest or any other offer received in response to this request for service and shall be entitled to

reject any or all offers, including those received late, or incomplete, without assigning any reason.

Bids may be rejected in case Conditional Bids OR If the information provided by the Bidder is found to be incorrect/misleading/fraudulent at any stage/time during the procurement process OR Any effort on the part of a Bidder to influence the bid evaluation, bid comparison or contract award decisions OR Bids received after the prescribed time & date for receipt of bids.

The deadline for receiving the bids is 26<sup>th</sup> September 2024 before 05.30 pm. No bids will be entertained after the deadline. The bids are to be submitted in response to this proposal/email.

\*\*\*\*\*